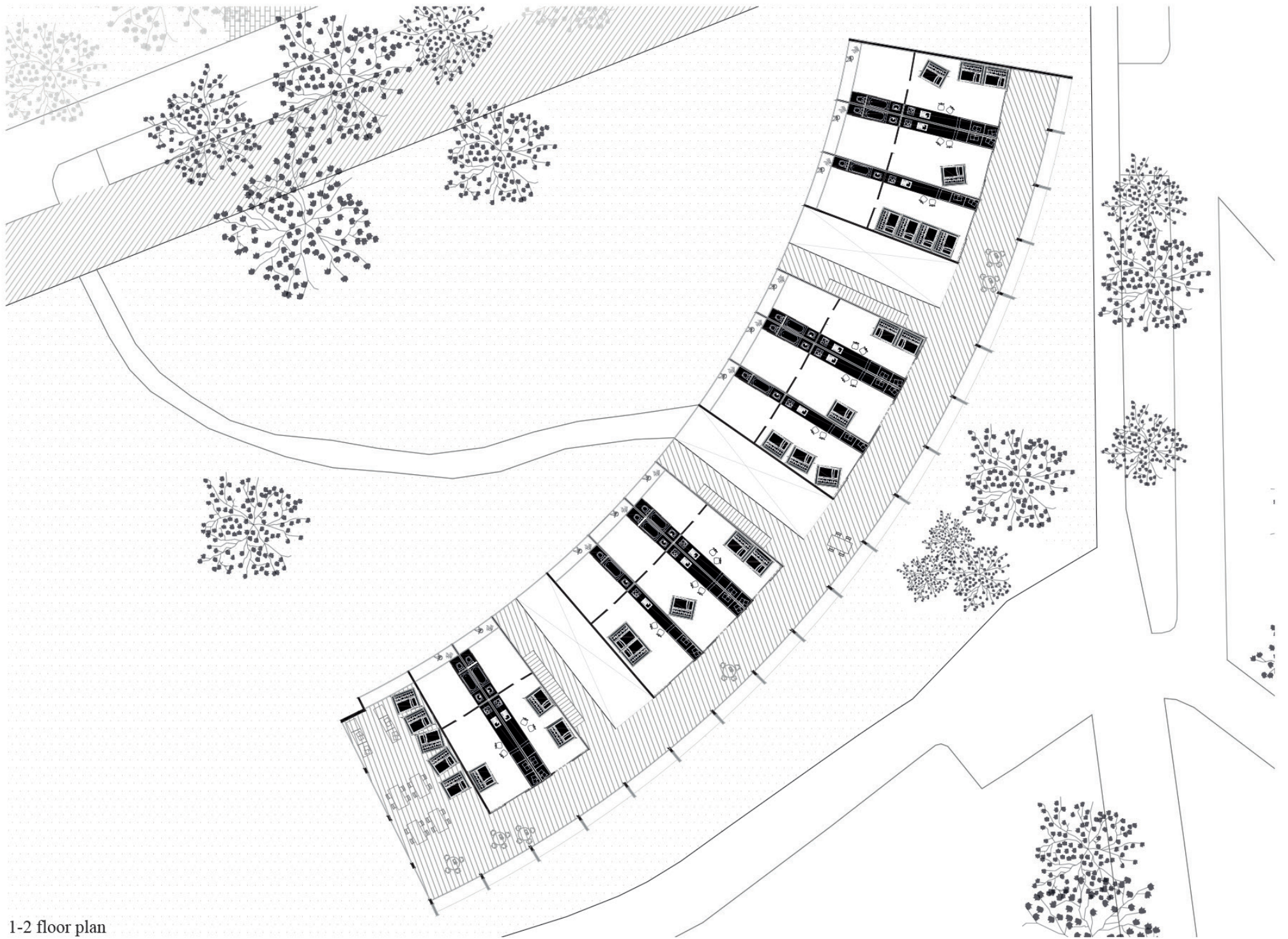


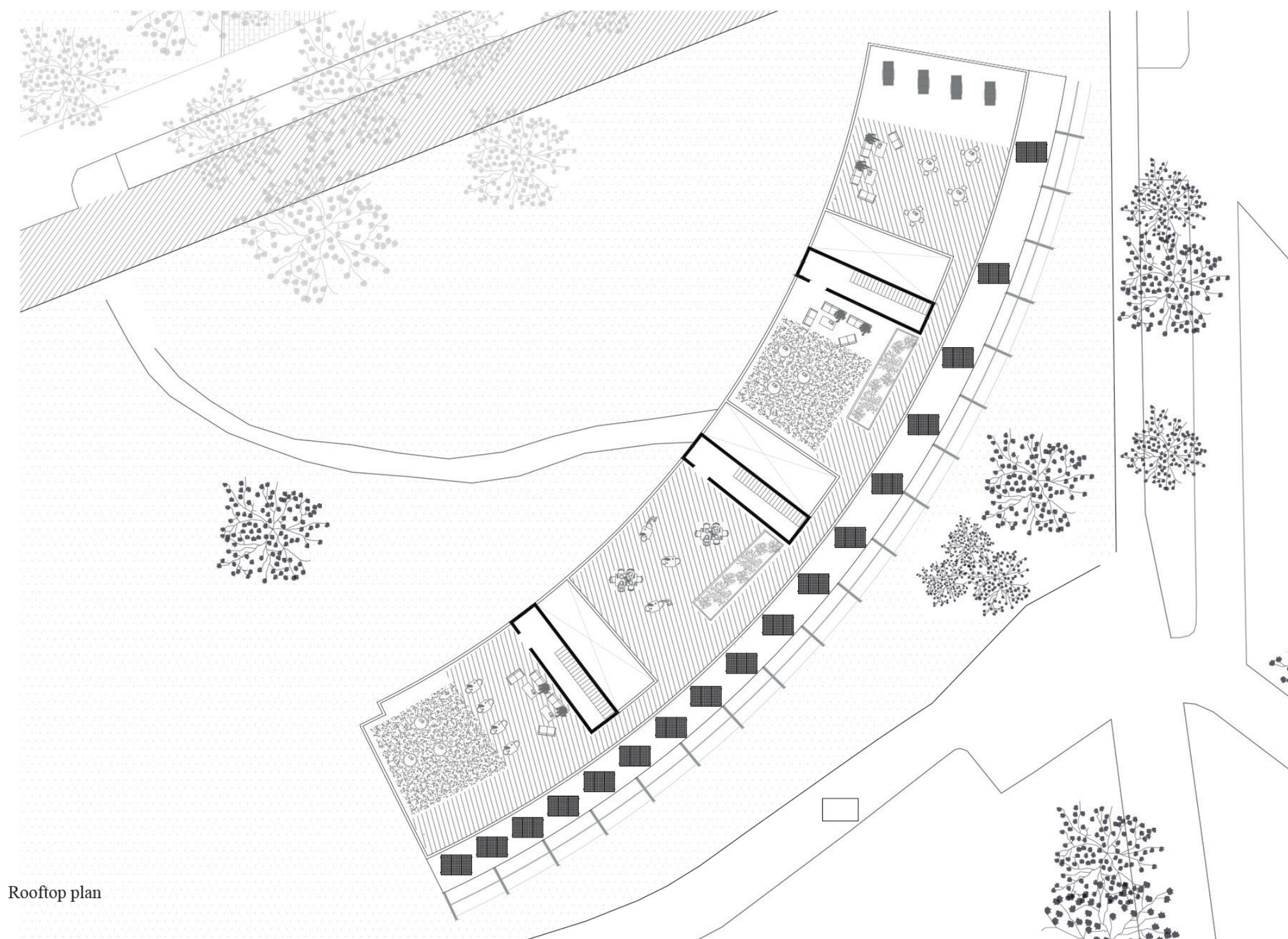
Renovation



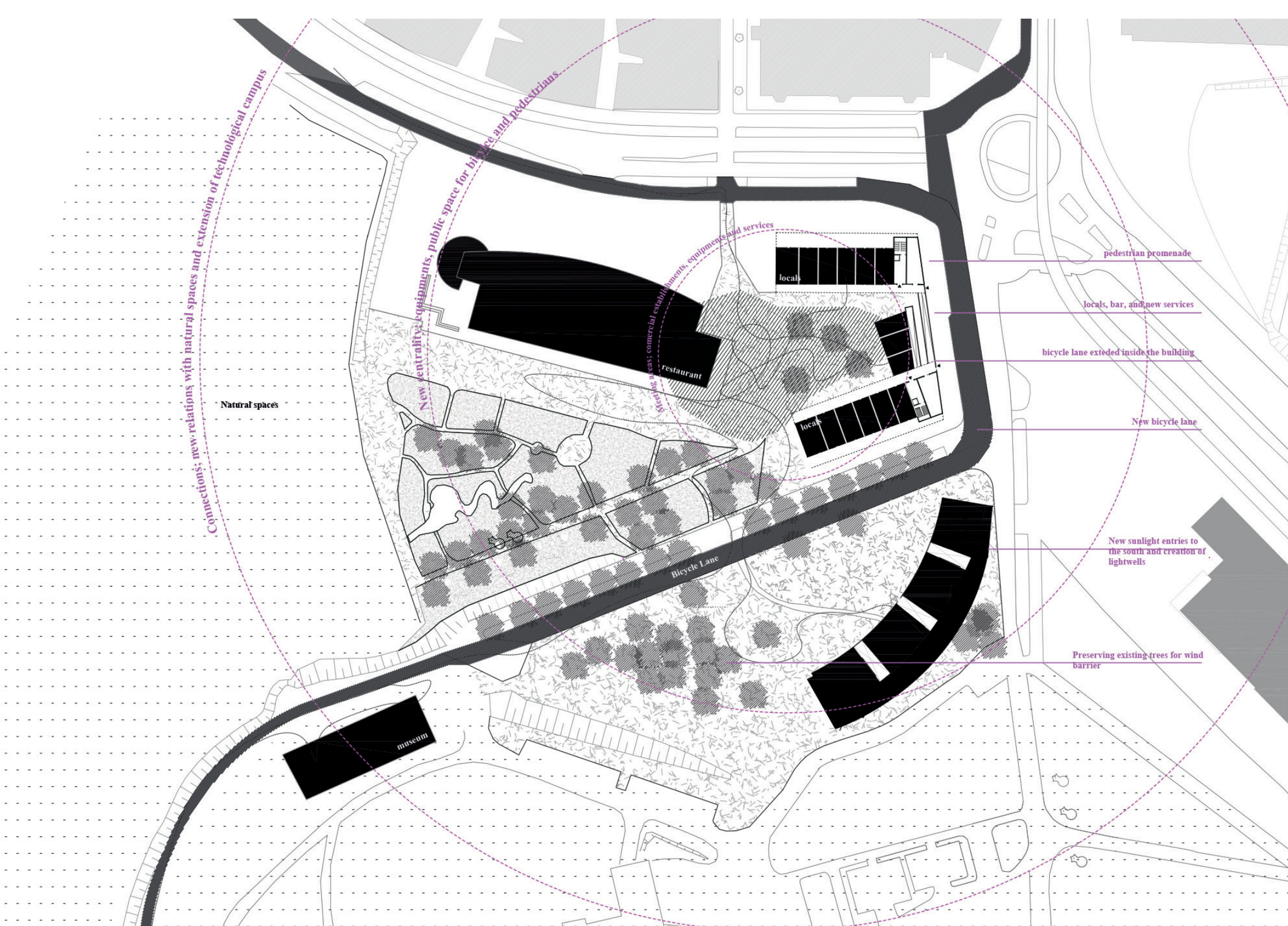
groundfloor plan



1-2 floor plan

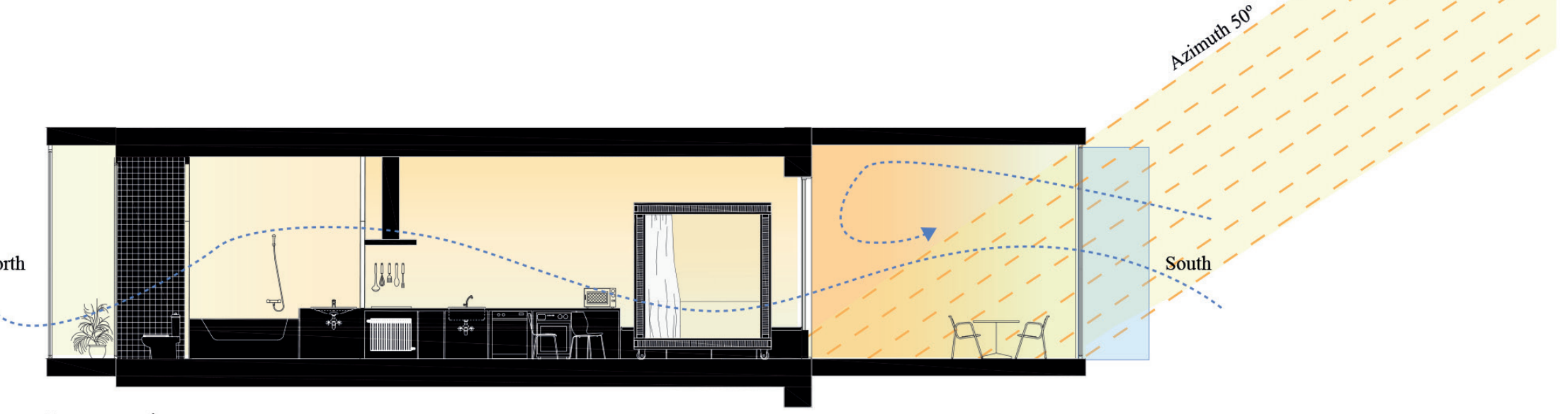


Rooftop plan

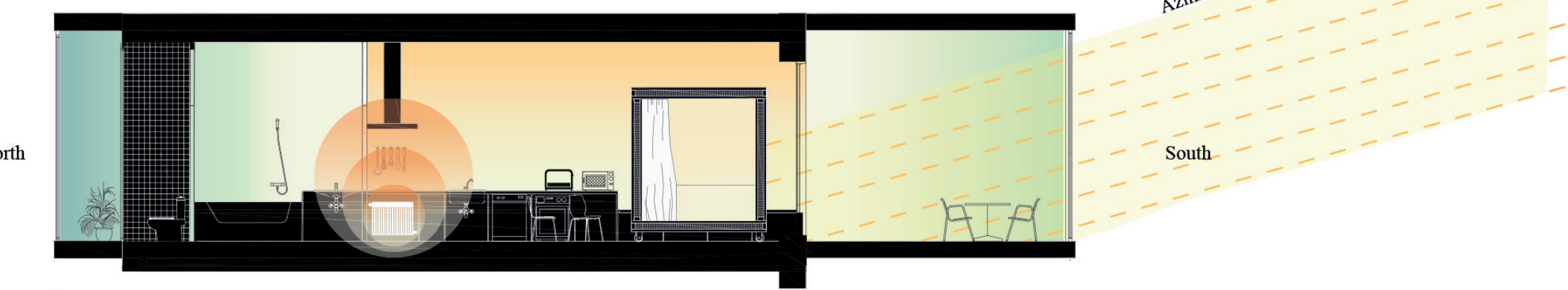


Ground floor:
1. Services and common spaces. Incorporating services on the ground floor, such as a cafeteria, multipurpose rooms and meeting rooms, aims to transform the building into an activity center. In both the southern perimeter of the building and in the high wells areas, we designed a variety of common and lounge spaces. Both services and common spaces are intended to be used not only by the residents but also by any other student or visitor.
Floor 1-2
1. Living units: 11 living units per floor, each one with its respective service core, bedroom and lounge modules. Easily and highly flexible according to the user needs. It is possible to introduce extra bedroom units into the living units when in need of extra accommodation.
2. Common room: 1 common room per floor. Multi-purpose use: study, leisure, and bedroom unit storage.
3. Colonnaded transitional spaces: Transitional space colonized by activity, multiple seating areas, flexibility of use.

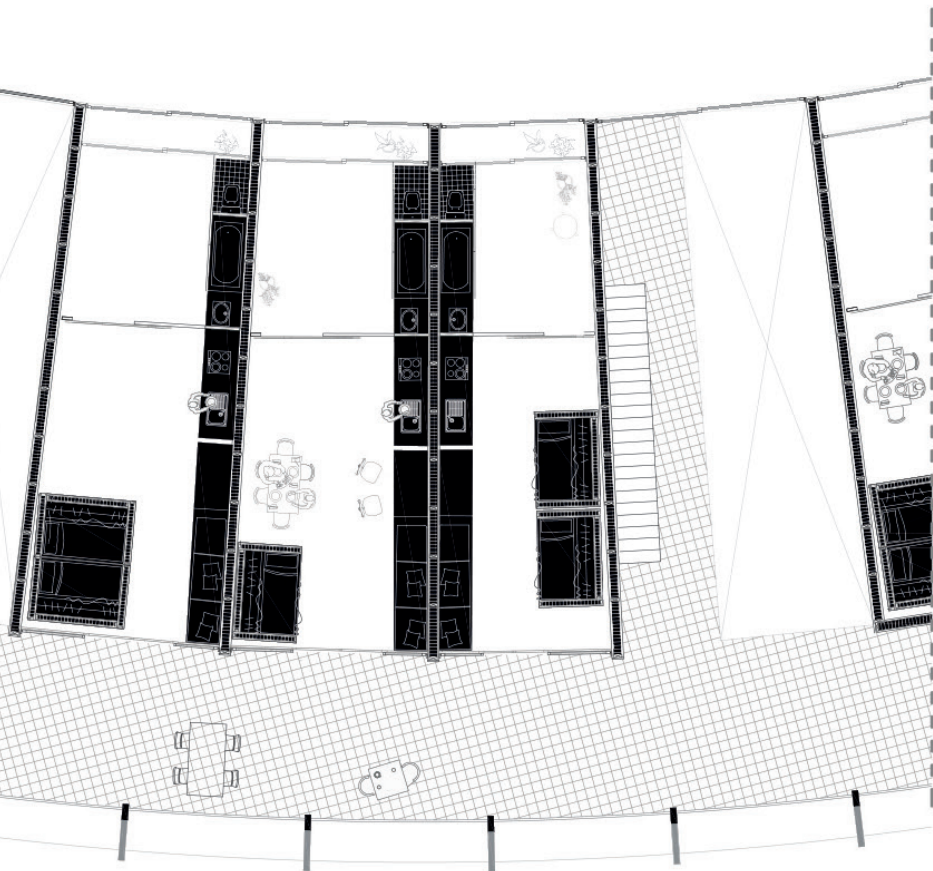
Rooftop:
1. Photovoltaic panels: Installation of photovoltaic panels generate the electricity needed for artificial lighting and domestic use.
2. Common spaces: The rooftop includes 4 separated common spaces. These spaces include various types of furniture and common garden areas.



Summer section

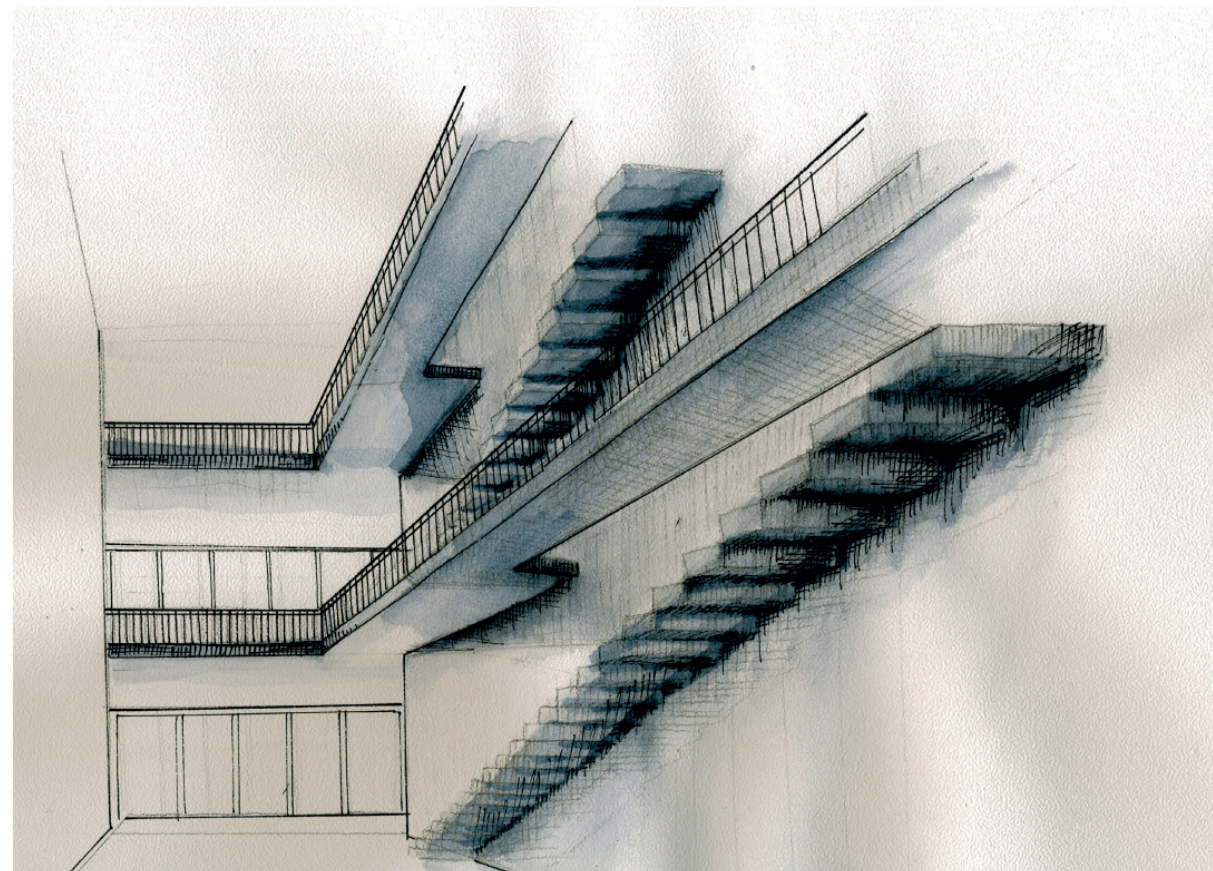


Winter section



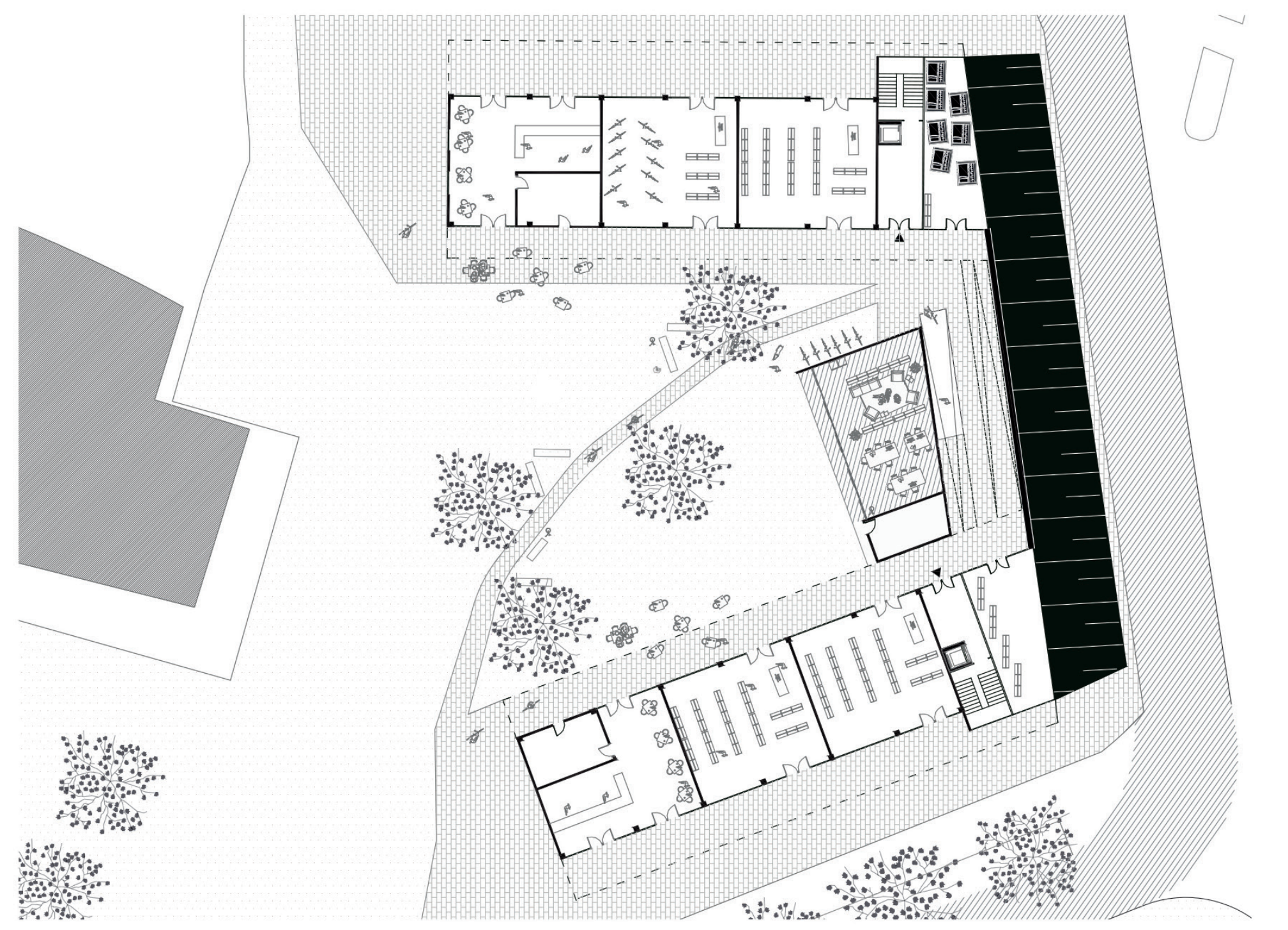
Typology 1

m²: 50-70m²
users: up to 3 residents

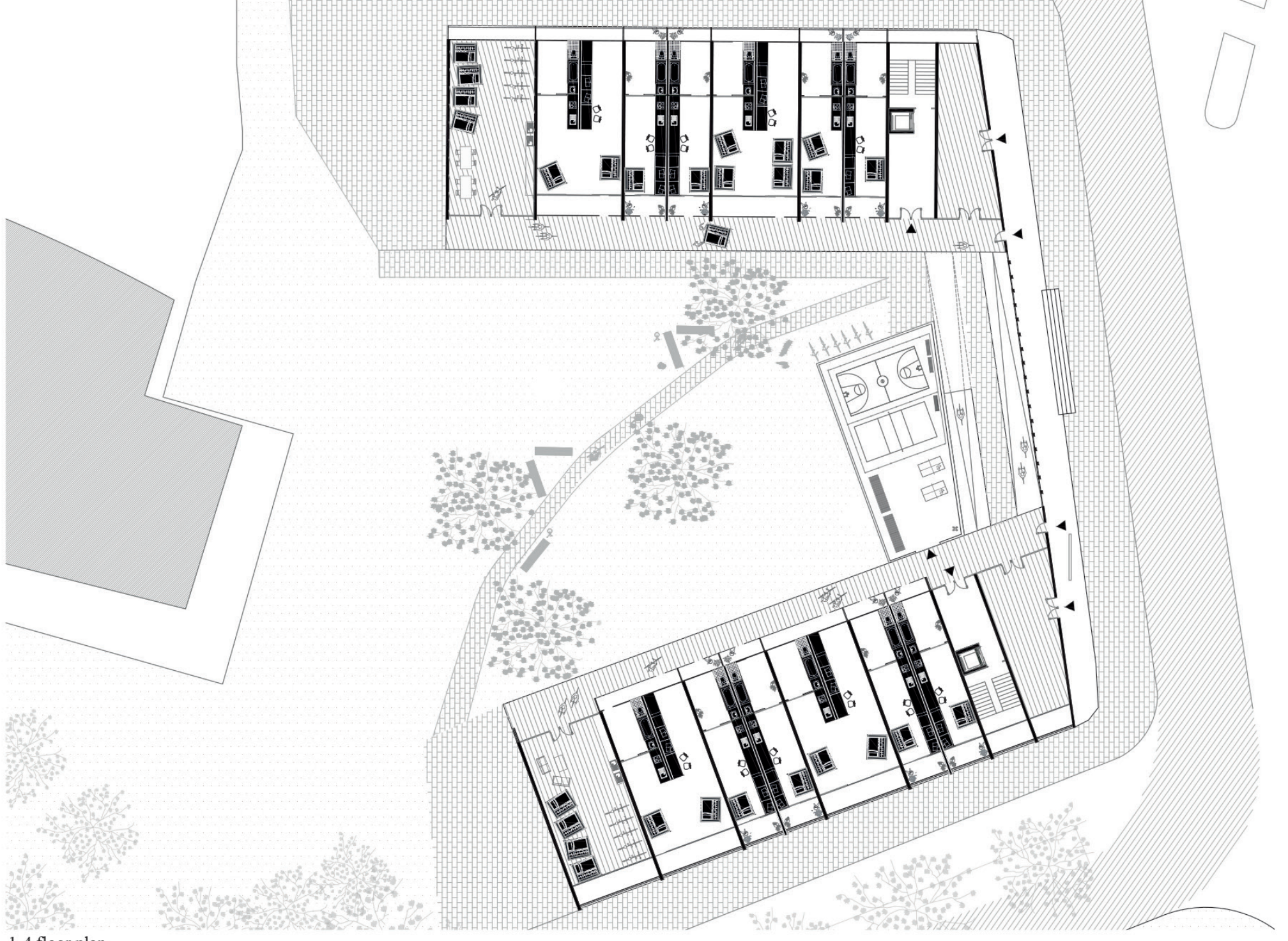


Lightwell view

New Construction



groundfloor plan



1-4 floor plan



Rooftop plan

GROUND FLOOR

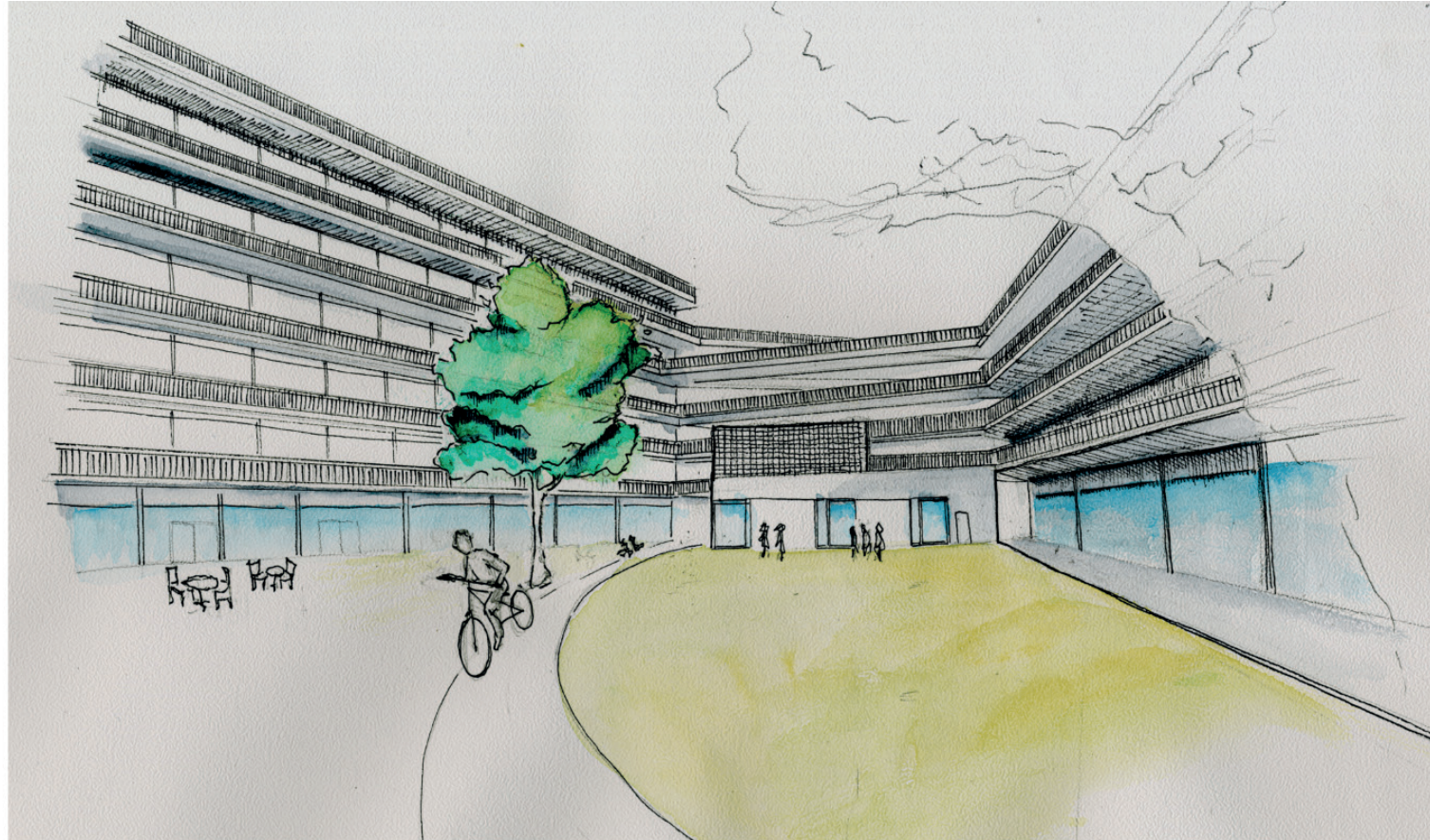
1. Commercial premises and Services: Incorporating commercial spaces on the ground floor, along with amenities such as a cafeteria, aims to strengthen the connection of the new building with the public space. The intention is to preserve the current ambience created by the existing brewery. Adjacent to the ramps, we introduce a ground-level structure with an accessible rooftop, serving as co-working space. This design seeks to enhance their utilization, not only to residents of the student residence but also to other campus students who wish to utilize it.
2. Mobility: A bike lane is implemented, crossing through the square to encourage the adoption of sustainable wheeled transportation. Moreover, this lane extends seamlessly into the building's interior via ramps, facilitating bike movement within the living units.

FLOOR 1-4

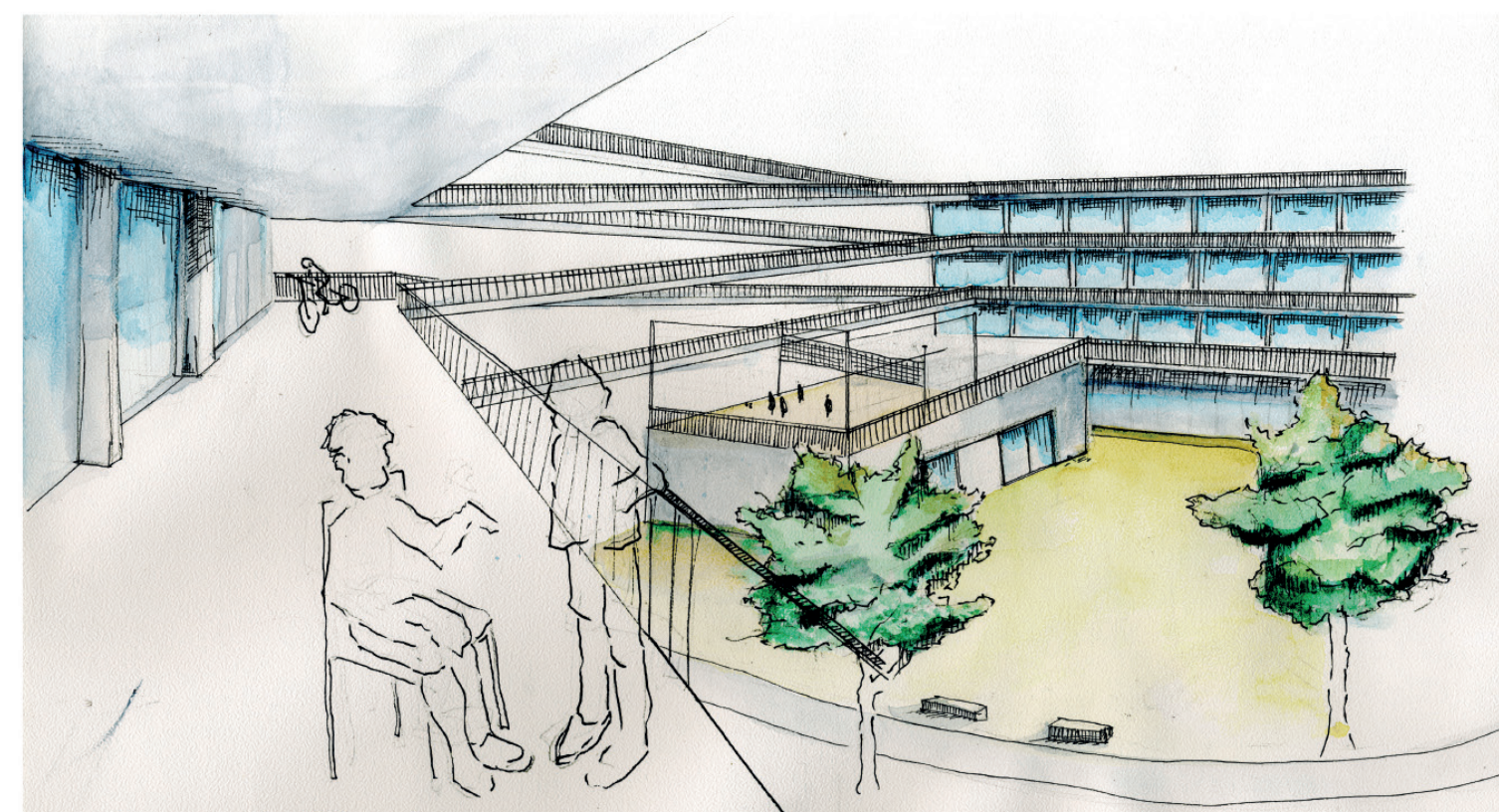
1. Living units: From 8 to 16 living units per floor. Each volume is organized in 4 fixed installation cores, while the rest of the plan is highly flexible according to the user needs. Allowing to introduce extra bedroom units into the living units when in need of extra accommodation.
2. Common room: 2 Common rooms per floor. (1 in each volume). Multi-purpose use: study, leisure, and bedroom unit storage.
3. Mobility: The walkways and ramps connecting the living units allow bicycle movement within the building, while also enabling the transportation of bedroom units.

ROOFTOP

1. Common spaces: The rooftop is equipped with sports facilities, as well as a cafeteria and furniture in order to create new quality spaces.
2. Photovoltaic Panels: The photovoltaic panels are installed above the covered areas, allowing for the production of electricity needed for both artificial lighting and domestic use.



Plaza view



Exterior walkways view



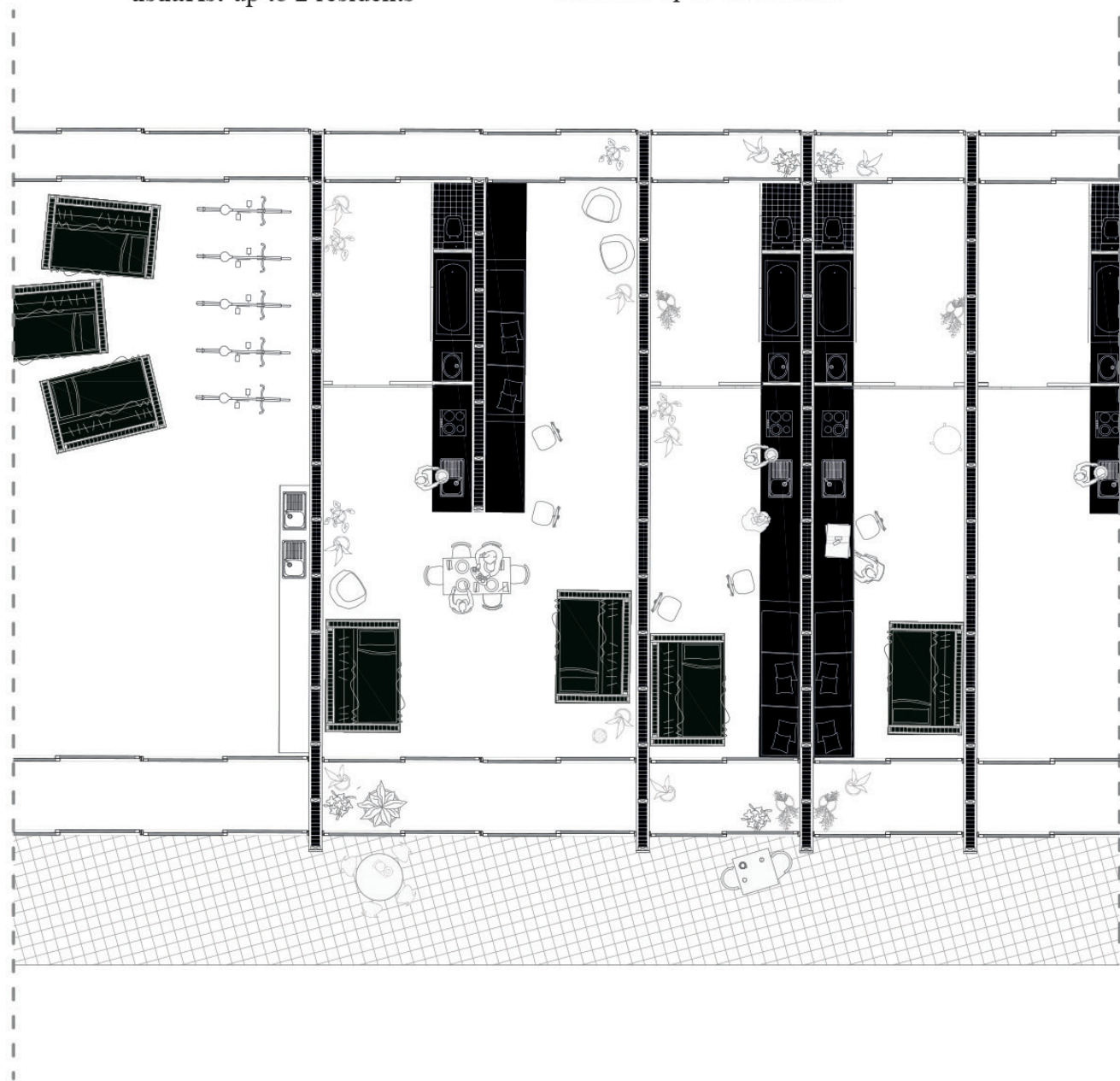
Day time section



Night time section

Typology 1

m²: 50m²
users: up to 2 residents



Typology 2

m²: 102m²
users: up to 3 residents

Starter pack:

Bedroom unit module

Mobile capsule of light wooden framework with insulation. Minimal unit for sleeping. Includes wardrobe. It closes with curtains composed of an inner layer of thermal blanket, reflecting the body's radiation heat inward while sleeping.

Service core

The service core is fixed in all living units. The core includes all necessary water and electricity installations.

Extension

The extension of the module serves to generate living spaces as well as storage. The extension varies in position depending on the preferences of the user and the type of living unit.